

City Lights

by Nina Djuric

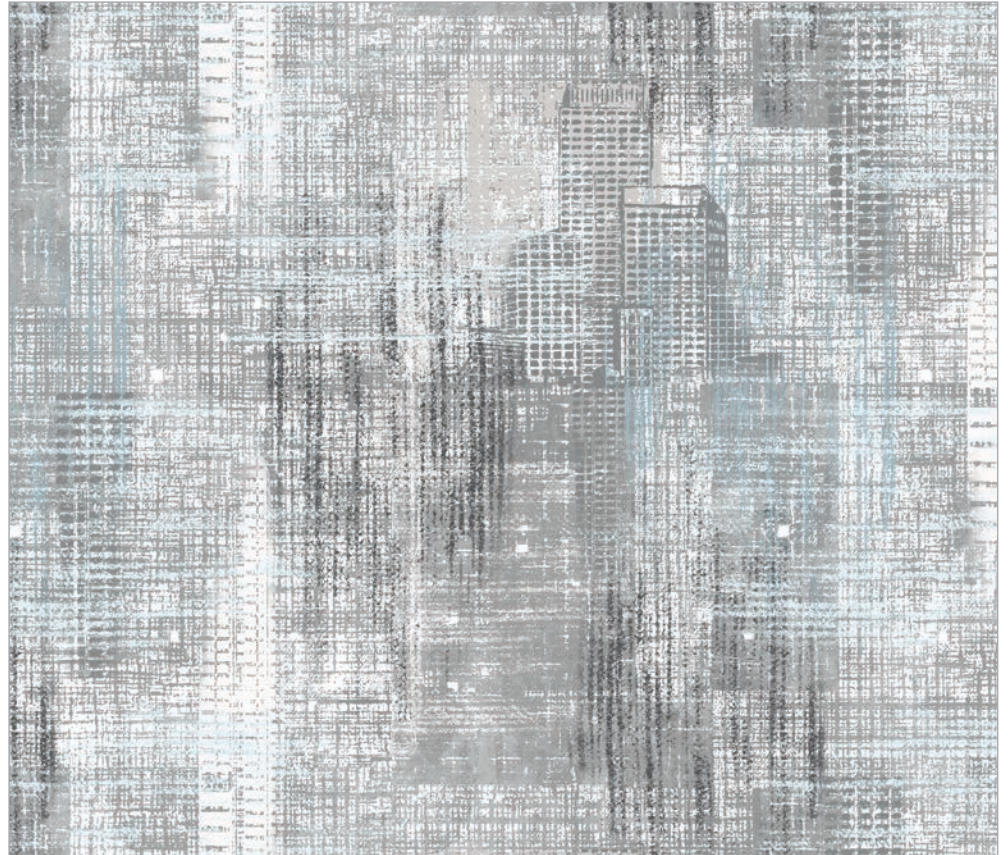


23956-99 | City Light Full Width Border | Black Multi



B23957-91
Available in
Wide Backing

23957-91 | City Scene | White Multi



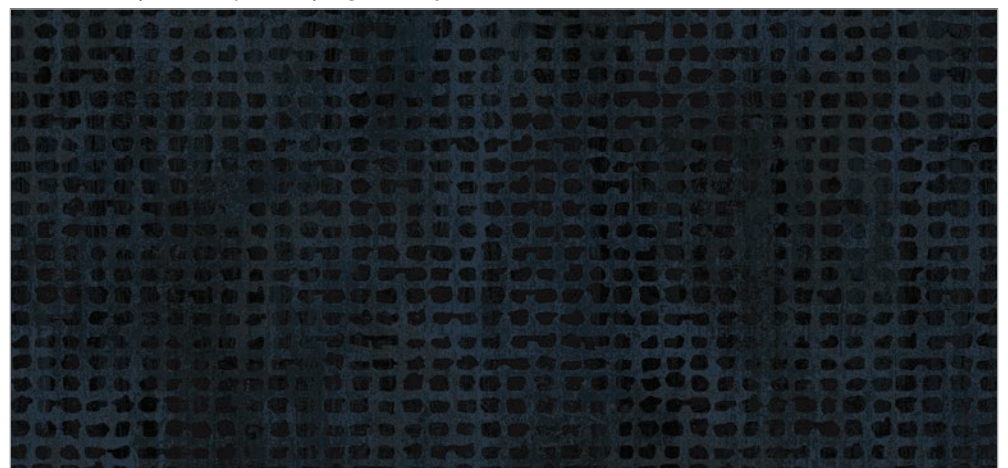
23960-92 | City Texture | Mid Gray



23957-99 | City Scene | Black Multi



23961-91 | Mini Squares | Light Gray



23961-99 | Mini Squares | Black

City Lights

by Nina Djuric

Created by talented designer Nina Djuric, City Lights features a panorama of skyscrapers softened by unique textures and tactile surfaces. The city night is dotted with lights emanating from the buildings and reflecting in the water below. The featured full width border appears to be a panel, but is actually running yardage allowing maximum flexibility for projects. A selection of textural urban prints are offered in a variety of sizes and colors ranging from the lightest lights to the deepest darks. Black, gray, blue and white characterize City Lights. A selection of pop colors provide lively accents for dynamic projects. Step into the night with a City Lights easy-sew canvas tote to make for yourself or a loved one!